

What is a Neighbourhood Plan?

- A Neighbourhood Plan will help shape the future of the village to 2031 and beyond
- It will give the local community a greater say in planning issues, letting local people decide the vision for their area, influencing the amount and location of new development
- The plan will be voted on in a local referendum
- We need your help and input to produce a plan which reflects the views and aspirations of our village



What happened between 2001 and 2011?

The following slides show:

- Increases in population
- A significant rise in school age children
- An increase in rented homes
- Increased household size
- Increased economic activity rate
- A higher qualified population
- Increased car ownership

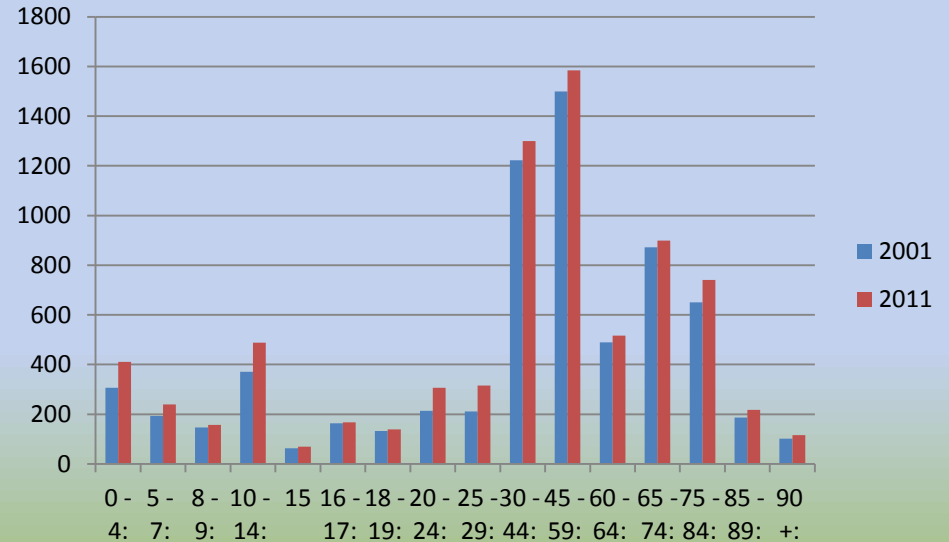
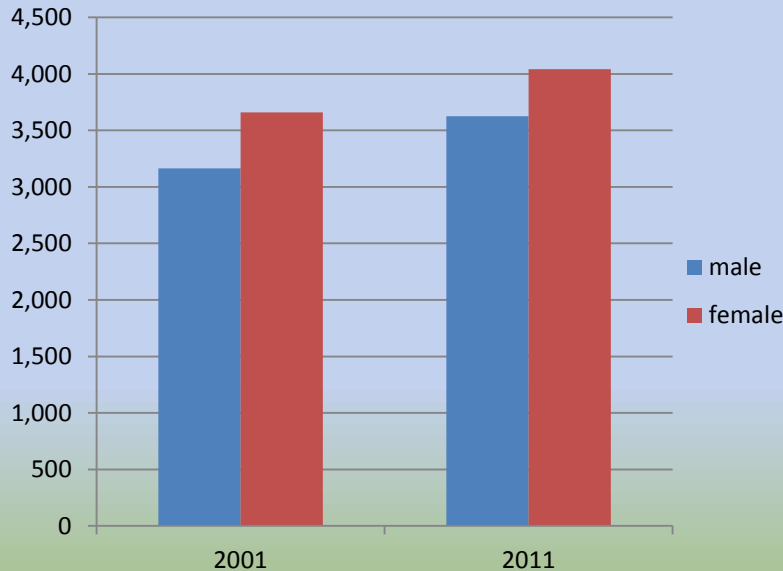


The Impacts

- More pressure on infrastructure
 - Health services
 - Transport
 - Schools
 - Drainage
 - Water supply
 - Community Facilities



Population by gender and age



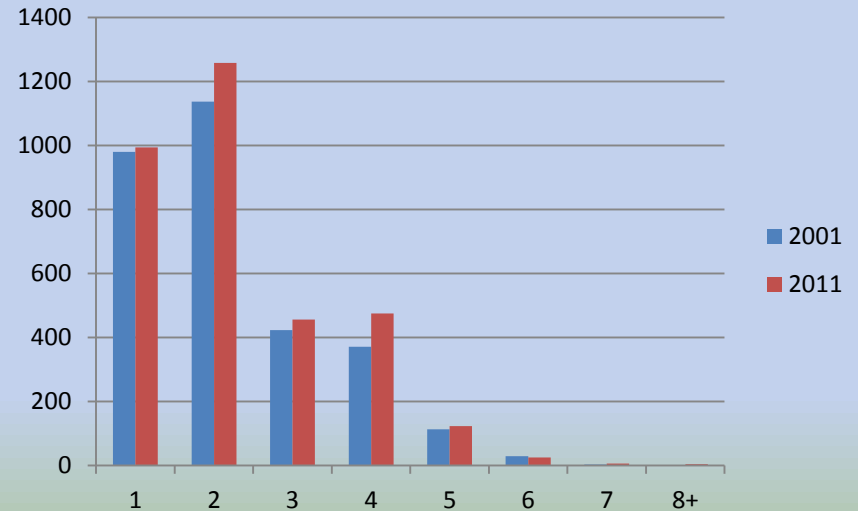
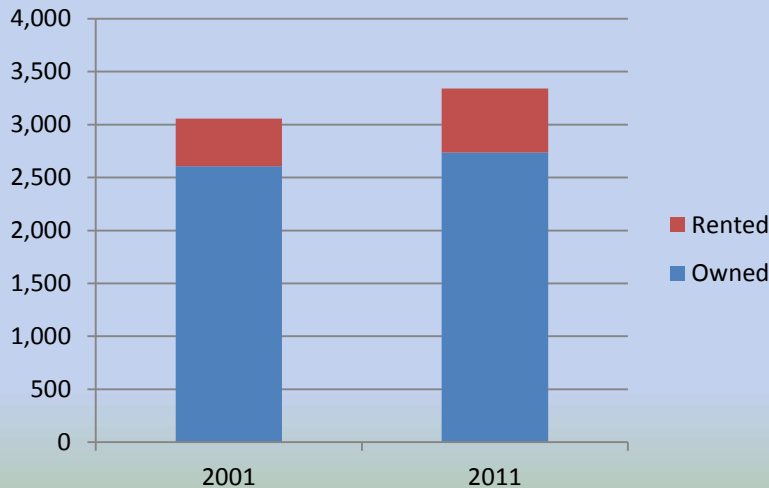
Population:
2001: 6,821
2011: 7,667
Increase 12.4%

Age Structure:
Average Age 2001: 46.3
Average Age 2011: 45.0
Decrease 2.8%

% Increase in 0-15 year olds: 26.4%



Home Ownership & Household Size



Home Ownership:

% Owned 2001: 85.2%

% Owned 2011: 81.9%

Decrease 3.9%

Household Size:

2001 Average: 2.21

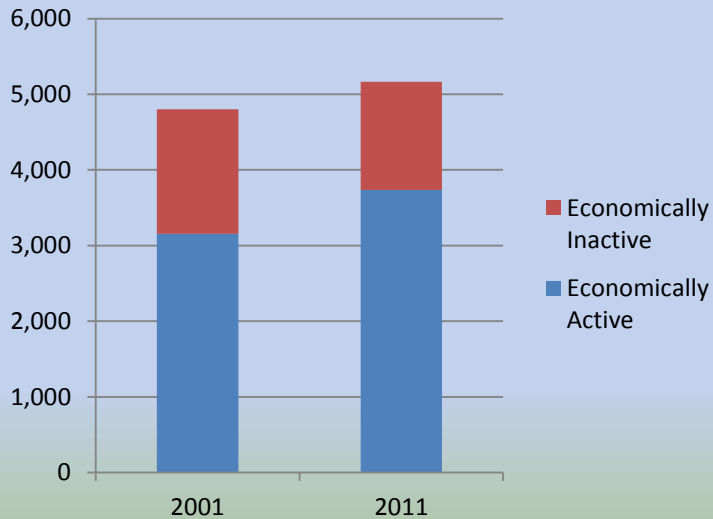
2011 Average: 2.28

Increase 3.0%

% Increase in households: 9.4%



Economic Activity & Qualifications

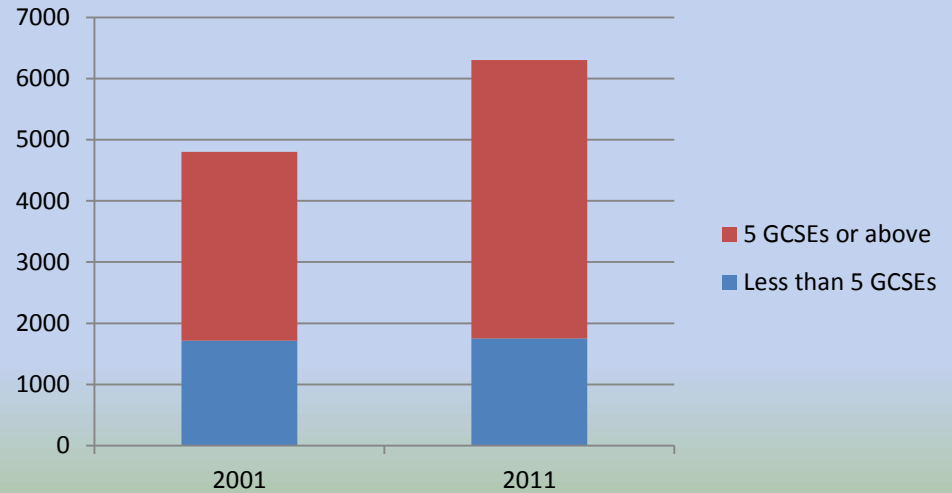


Economic Activity (15-74):

2001 Rate: 0.46

2011 Rate: 0.49

Increase 5.4%



Qualifications:

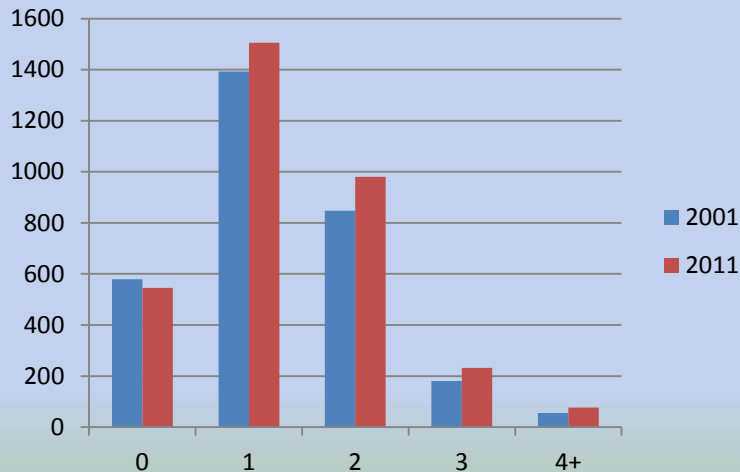
2001 % 5 GCSEs or above: 57.1%

2011 % 5 GCSEs or above: 68.4%

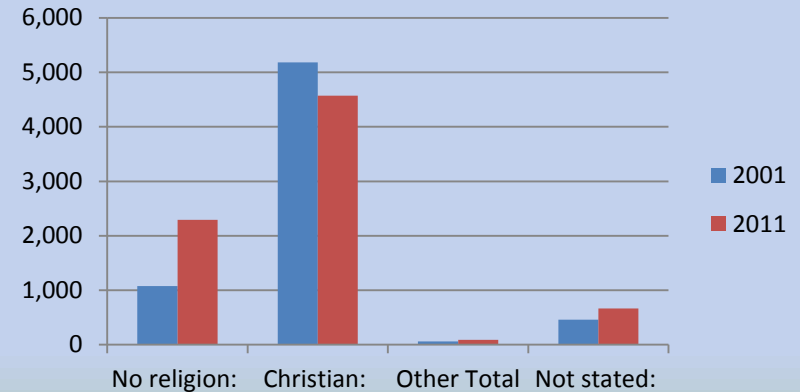
Increase 19.8%



Household Car Ownership & Religion



Household Car Ownership:
2001 Average: 1.27 cars per household
2011 Average: 1.35 cars per household
Increase 6.3%



Religion:
2001 % Christian: 76%
2011 % Christian: 59%
Decrease 21.8%

